



About Bartelt Packaging

Bartelt is a trusted manufacturer of pouching, cartoning, shrink wrapping, over wrapping, and case and tray packing systems, providing dependable and long-lasting solutions to food and non-food industries. Bartelt also operates as the master distributor for both FLtècnics' rollstock and pre-made pouch and Cetec Industrie large bag format packaging machines. As the world's first developer of intermittent motion horizontal form fill seal pouching machines, Bartelt is a true pioneer in automated packaging. From simple to advanced applications spanning primary and secondary packaging, quality components and a durable design are incorporated into every solution. Bartelt is a product brand of ProMach, a global leader in packaging line solutions. As part of the ProMach Flexibles & Trays business line, Bartelt helps our packaging customers protect their products and earn the trust of their consumers. ProMach is performance, and the proof is in every package. Learn more about Bartelt at www.BarteltPackaging.com and more about ProMach at www.ProMachBuilt.com

BARTELT PACKAGING, LLC
5501 N. Washington Blvd.
Sarasota, FL 34243

P: 941-359-4000
E: Bartelt.Sales@ProMachBuilt.com
BarteltPackaging.com



CMC CARTONER

CONTINUOUS MOTION END-LOAD

F&T

FLEXIBLES
& TRAYS

CMC Cartoner

CONTINUOUS MOTION END-LOAD

Bartelt CMC Cartoner

The Bartelt® CMC cartoner is a high performance continuous motion cartoner with horizontal product feed. This servo driven model offers the highest possible flexibility, short change-over times and a hygienic design.

Depending on machine pitch and application, the CMC cartoners can achieve output up to 400 cartons per minute.

PRODUCT APPLICATIONS

- Baked Goods
- Confectionery
- Frozen Foods
- Food Products
- Pharmaceuticals
- Consumer Goods
- Personal Care
- Tobacco Goods



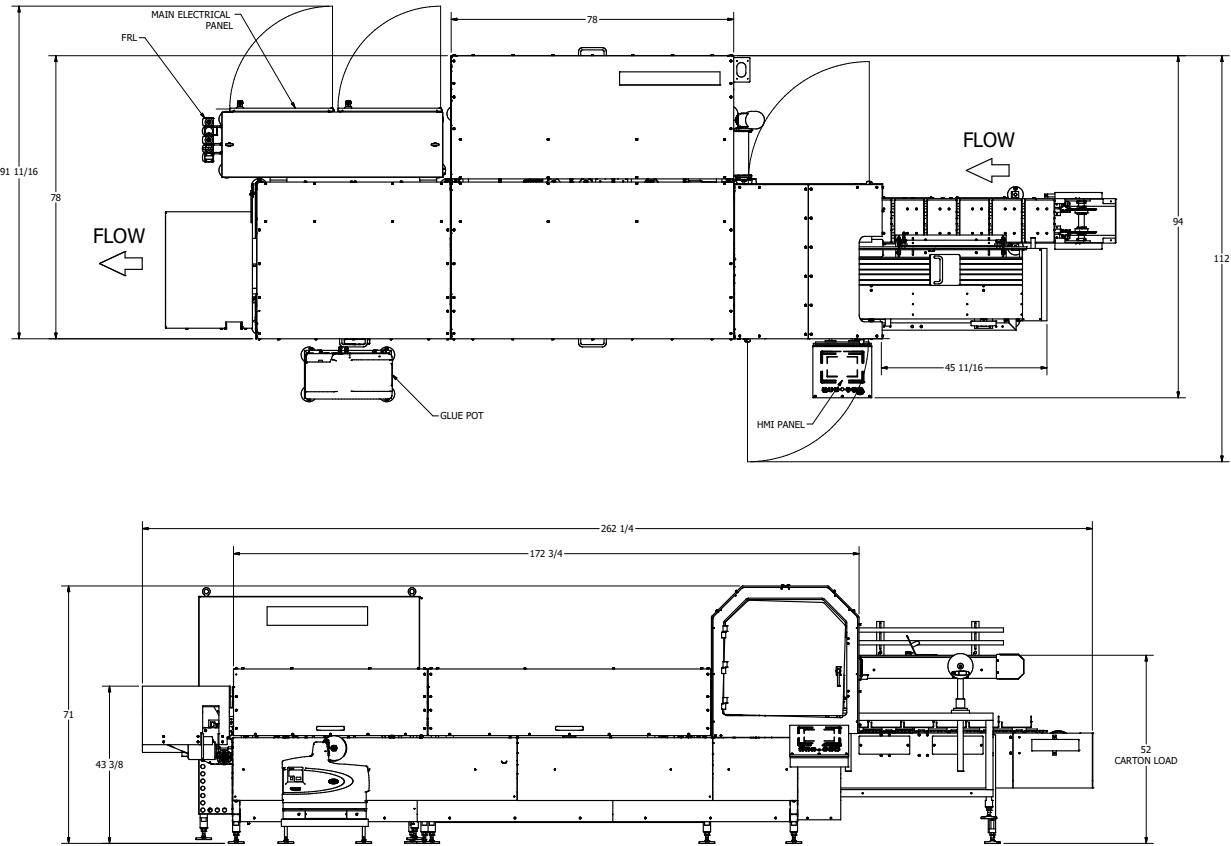
FEATURES & BENEFITS

- No product/no carton, no carton/no load feature
- Air operated top rail
- Modular design
- Full servo execution
- Quick and repeatable size changeover
- Single-packs and multi-packs
- Runs a variety of carton sizes and styles
- Easy to upgrade
- Ergonomically designed

OPTIONS

- Carton coding – inkjet, laser, thermal transfer
- Open flap detect
- Product conditioner
- Various product transfers
- Servo adjustable in-feed
- Drop gate combiner
- Checkweigher
- Glue system

CONFIGURATION



Contact Bartelt to inquire about packaging machinery to fit your unique requirements.
(941) 359-4000

MACHINE SPECIFICATIONS

Power	460V, 60 Hz, 3-phase or 400V, Controls: 24VDC	Drive Motor	Servo main drive
Control	Standard—Rockwell electronic design	Air Flow	20 SCFM / 0.57 SCMM
Output	Up to 400 cpm	Air Pressure	80 PSI / 5.5 Bar

CARTON DIMENSIONS

Length	Min: 2" (51 mm) / Max: 10.5" (266 mm)	Depth	Min: 3.25" (83 mm) / Max: 12" (304 mm)
Width	Min: 0.63" (16 mm) / Max: 4" (101 mm)		

CARTON STYLES

Standard Tuck End	Sleeve
Standard Glue Flap	Fifth Panel
Reverse Tuck End	Gable Top